

Fast Manual

Instructions for Economic DVR/NVR

V1.0

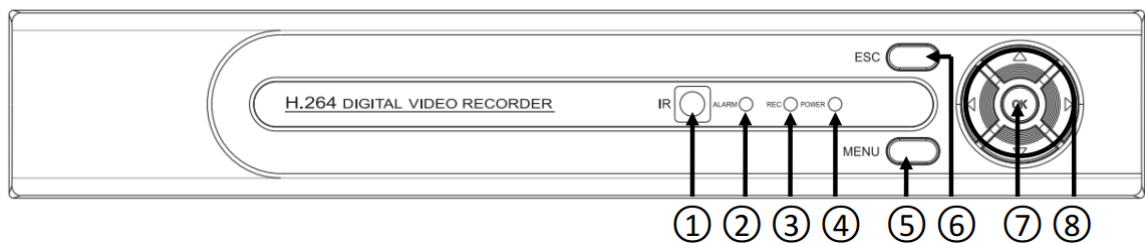
1. Statement

Thank you for purchasing from us. Please be free to contact us whenever you require assistance. This manual is for the Economic DVR/NVR and DVR/NVR from GT Series. If need further details, please check the user manual within CD.

Product enhancements will be continuously added to the product series without notice.

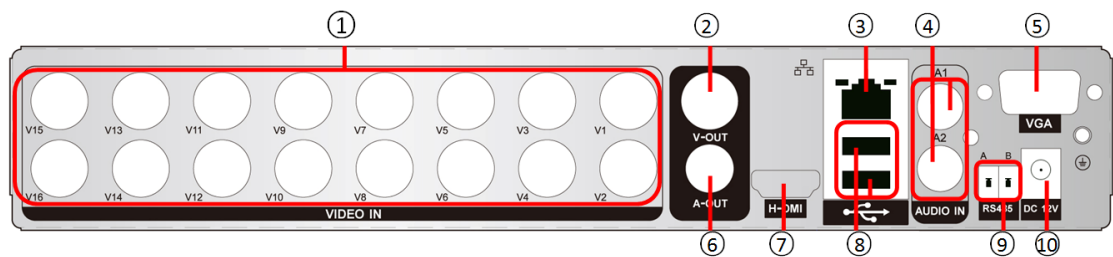
2. Appearance and Interface

2.1 Front-end Panel



1	Remote Control Receiver	2	Alarm Indicator	3	Video Indicator
4	Power Indicator	5	Main Menu	6	Exit
7	Enter	8	Direction Key		

2.2 Rear Panel



1	Video Input	2	BNC Video Output	3	Network Cable Interface
4	Audio Input	5	VGA Output	6	Audio Output
7	HDMI Output	8	USB Interface	9	RS485 Interface
10	DC12V Input				

3 Boot Up/Shut Down and User Login

3.1 HDD Installation

Skip these steps if you do not require storage.



① Use Screws to fix the HDD in the board.



② Connect the HDD cable with power.

3.2 Boot Up

When the device is connected to a power supply, the indicator lights up and the DVR/NVR boots up.

Notes:

1. Use the correct adapter to avoid abnormal functioning or damage.
2. Switch of the power (some might have power switches).

3.3 Shut Down

To shut down the device, two options are available: soft-off and hard-off.

Soft-off: Go to main menu > shut down system

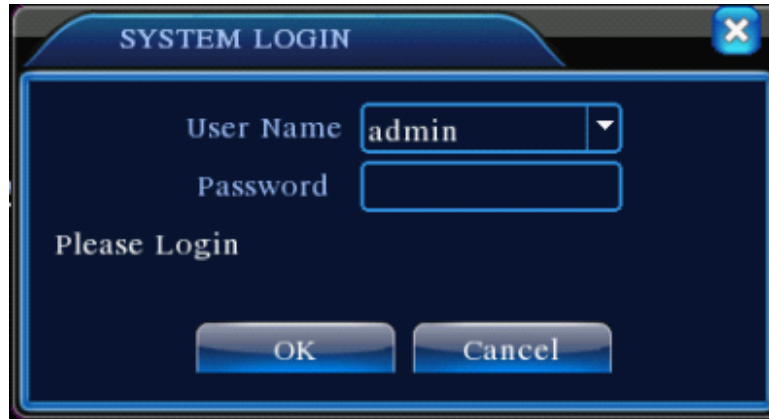
Hard-off: Disconnect the power supply at the rear panel.

Notes:

1. When the DVR/NVR is shut down abnormally, rebooting causes all recordings to be saved automatically and the DVR/NVR is restored to its previous status.
2. Replace the HDD: Disconnect the power supply before replacing.

3.4 System Login

When the DVR/NVR boots-up, the user must login and the system provides the corresponding functions within the user's purview. There are two user settings, admin and default. Admin is the default user with no password.



Password protection: If the password is continuously wrong three times, an alarm is activated. If the password is continuously wrong five times, the account will be locked (rebooting or waiting half an hour will automatically unlock the account).

4 Network Settings

Go to Main Menu > System Settings > Network Settings.

IP Address: Default is 192.168.1.10.

Subnet Mask: Default is 255.255.255.0.

Default Gateway: Default is 192.168.1.1.

Main Menu->System->NetWork

Net Card	Wire Netcard	<input type="checkbox"/> DHCP Enable
IP Address	192 . 168 . 1 . 10	
Subnet Mask	255 . 255 . 255 . 0	
Gateway	192 . 168 . 1 . 1	
Primary DNS	0 . 0 . 0 . 0	
Secondary DNS	0 . 0 . 0 . 0	
TCP Port	34567	
HTTP Port	80	
HS Download	<input type="checkbox"/>	
Transfer Policy	Quality Prefer	

OK Cancel

Note: IP address of the speed dome must share the same network segment with the router and conform to its IP instead of conflicting with other IPs to ensure the device has access to the network. Go to main menu > system settings > network settings, and select auto obtain IP address (Router should enable DHCP).

5 HDD Settings

The DVR/NVR must contain a HDD.

5.1 HDD Management

After installing a HDD, boot up the DVR/NVR, and go to Main Menu > Management Tools > Storage Management to format the HDD. Then set the HDD as read-write.

Note: At least one read-write disk is needed for normal recording.

5.2 Video Settings

Go to Main Menu > Recordings > Record Settings.



Channel: Choose the corresponding channel number. Choose all to select all the channels.

Redundancy: Choose the redundancy function to double backup the file.

Length: Set the time length of each video file between 1 minute and 120 minutes. 60 minutes is as default value.

Record Control: Set the video state—schedule, manual, or stop.

Configuration: Record according to the set video type (common, detection) and time section.

Manual: Corresponding channel starts recording 24 hours non-stop.

Stop: Whatever state the channel is in, the corresponding channel stops recording when the stop button is pressed.

Period: Set the time period for common recording, the recording will begin only in the set range.

Record type: Set recording type-regular or detection.

Regular: Record according to the set time period. The video file type is "R".

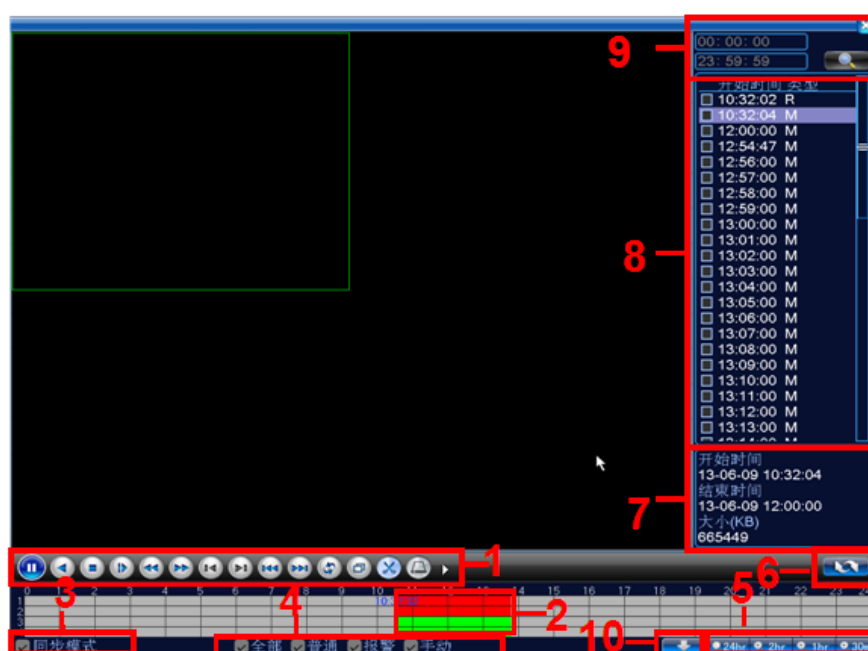
Detect: Within the set time period, trigger the motion detect, video blind, video loss, or abnormal analysis. When above alarm is set as the opening recording, the recording detection state is on. The video file type is M.

6 Playback

There are two ways to play the video files in the HDD:

1. In the right-click shortcut menu.
2. Main Menu > Record > Playback.

Note: The HDD to which video files are saved must be configured to be read-write or read-only.



Pic. Record playback (暂时未提供英文界面)

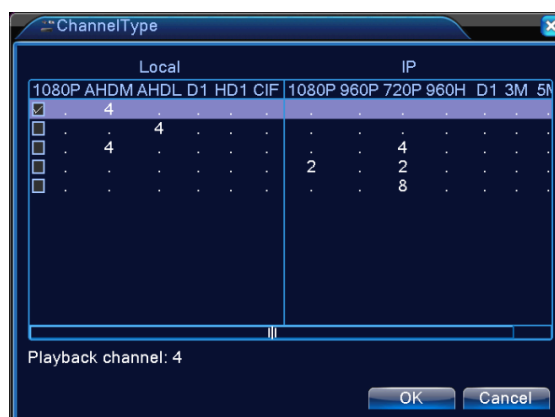
1	Playback Control	2	Time Display	3	Synchronous
4	Video Type	5	Time Schedule Options	6	Search by Time / Switch Mode
7	File Attributes	8	Listed Files	9	Search by Time
10	Search by Storage Location				

Double-click the file name to play the video.

7 Channel Management

Note: Not all models support this function.

Go to Main Menu > System Settings > Channel Management to configure; you can connect the IP camera under a pure network or hybrid network.



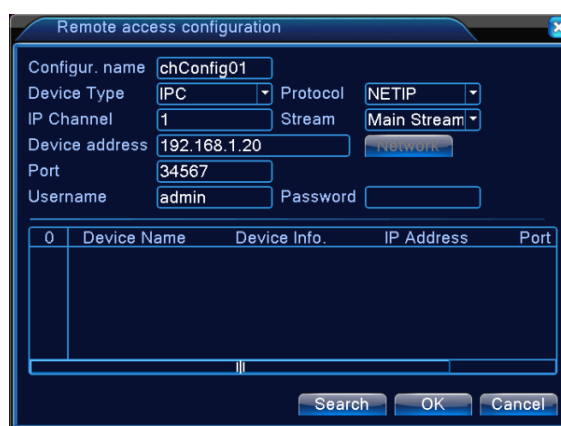
Go to Main Menu > System Settings > Channel Management to add the IP camera to the digital channels.

Enable: Settings are effective after enabling.

Channel: Select channel number, to add IP camera.

Connection Mode: Single connection and multi-connection. Under multi-connection, several devices can be connected to. Devices will be displayed one by one and the tour interval can be set (not less than 10s). Under single channel, only one monitoring device can be connected.

Click **Add** and the following interface will appear:



Search: Search and display IP addresses within the same LAN, such as those of IPCs, DVRs, and NVRs. When one IP address is chosen, its device name, type, IP address, port and protocol will be entered automatically.

Protocol: Supports NETTP, ONVIF, and all. Default is all.

Ok: Click **ok** to finish adding Return to the digital channel interface and select the added monitoring device to preview.

8 LAN Access

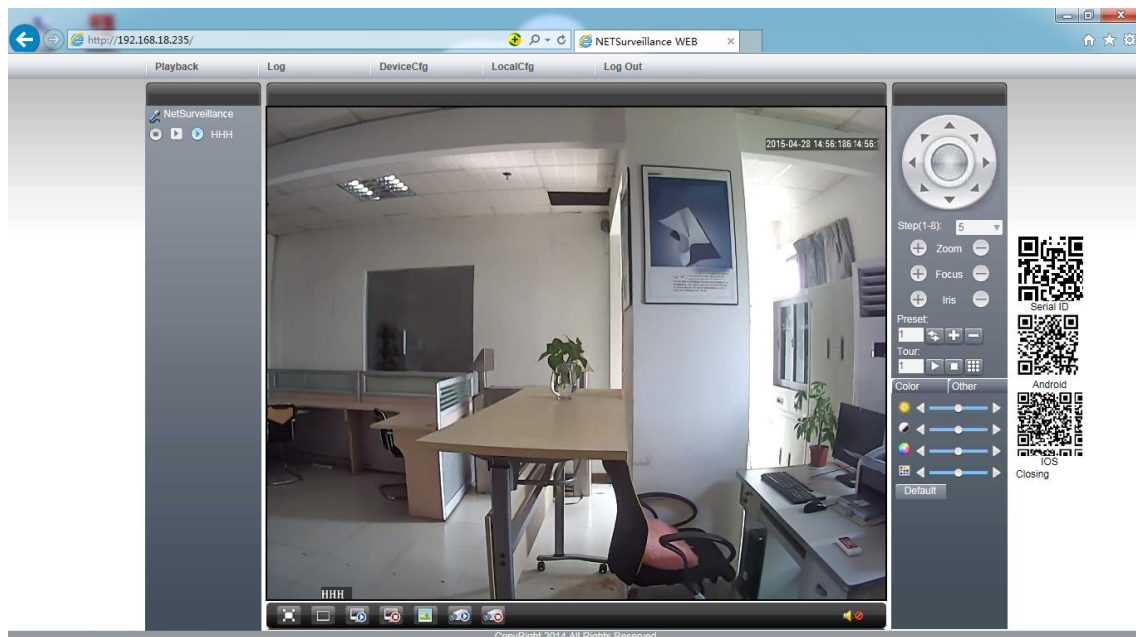
When the DVR/NVR is connected to the network, login the DVR/NVR to start remote monitoring via IE browser.

8.1 DVR/NVR Connection

Open IE browser and enter the IP address (for e.g., if the IP is 192.168.1.10 enter <http://192.168.1.10> to connect).

8.2 DVR/NVR Login

Enter the user name and password (the default user name is admin and it requires no password). Change the administrator password after login, as shown below.



Note: Plug-ins need to be installed if you login via IE browser. IE is the default browser for the plugins. Please set the IE security level. Go to Internet Options > Security > Customized Level > Activex and enable all of them. Alternately, or go to our official website to download and install the plug-ins (<http://www.xmeye.net>) or install the IE plug-in _V1.1.0.78.exe via CD.

8.3 Mobile Access

Network Environment: Wi-Fi, 3G

Mobile System: Android, Apple

Software Name: VmEyeCloud

Software Download: Google Market and app store

Note: When the device can access a public network, monitoring can be performed by public network monitoring via VmEyeSuper.

9 Public Network Access (cloud operation)

Cloud technology greatly facilitates public network monitoring. To set-up, please follow the steps below. If you do not require this, skip the steps below.

9.1 PC Access

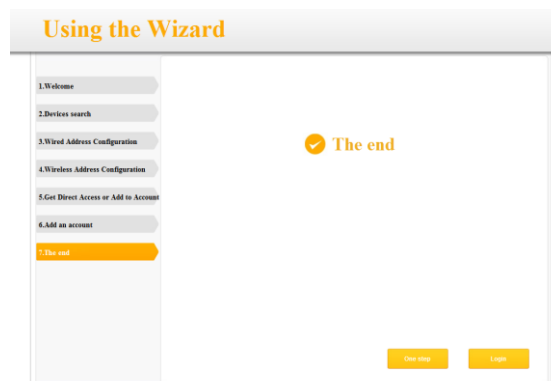
(1) Go to <http://xmeye.net> to login.



The image shows a web form titled "Login And Preview". At the top, there are two tabs: "By User" (selected) and "By Device". The form contains the following fields and elements:

- Username:** A text input field with placeholder text "Username Or E-Mail".
- Password:** A text input field.
- verify:** A text input field next to a CAPTCHA image showing the number "0374".
- Remember:** A checkbox labeled "Remember".
- Buttons:** Two red buttons labeled "Login" and "Enter Guide".
- Footer:** A red text prompt: "Please Click 'Enter Guide' if you visit first".

(2) Install step-by-step using the wizard.

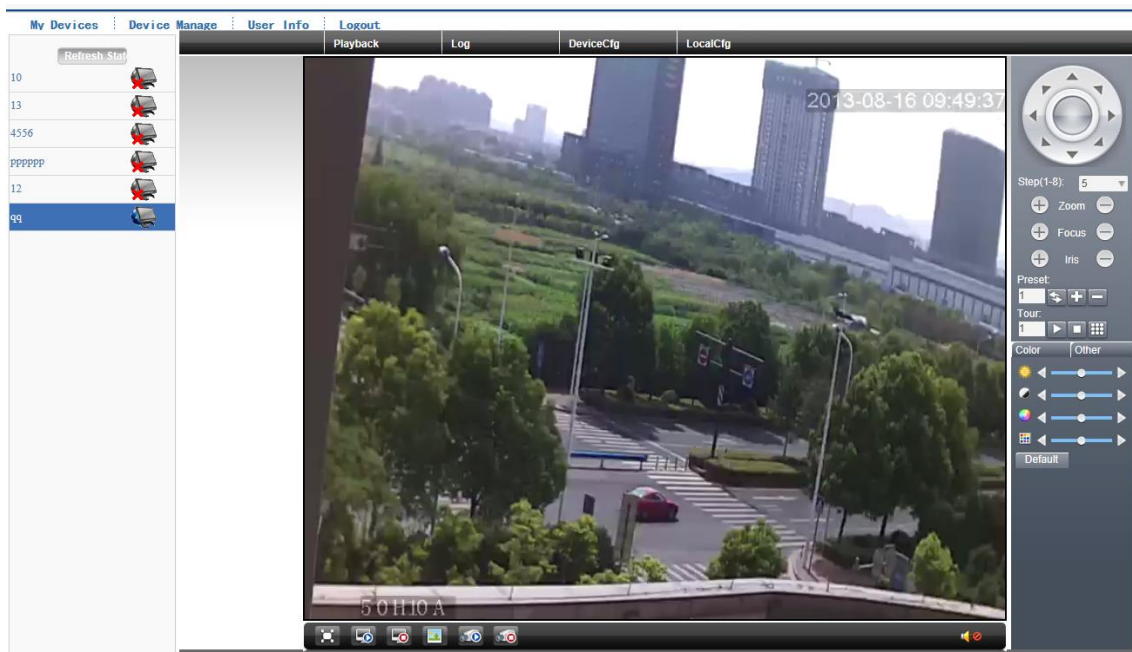


The image shows a screen titled "Using the Wizard". On the left, there is a vertical list of steps:

- 1>Welcome
- 2.Devices search
- 3.Wired Address Configuration
- 4.Wireless Address Configuration
- 5.Get Direct Access or Add to Account
- 6.Add an account
- 7.The end

Step 7, "The end", is highlighted in orange. In the center of the main area, there is a yellow checkmark icon followed by the text "The end". At the bottom right, there are two yellow buttons: "Go step" and "Login".

(3) Click login to enter the cloud service interface, as shown below:



(4) After successful configuration, you can access the device anytime and anywhere if you can connect to the internet. For PC monitoring, login to <http://www.xmeye.net>. Login with the user name and password (user name: guest; password: 123).

(5) The device list is on the left Click on the device for the preview.

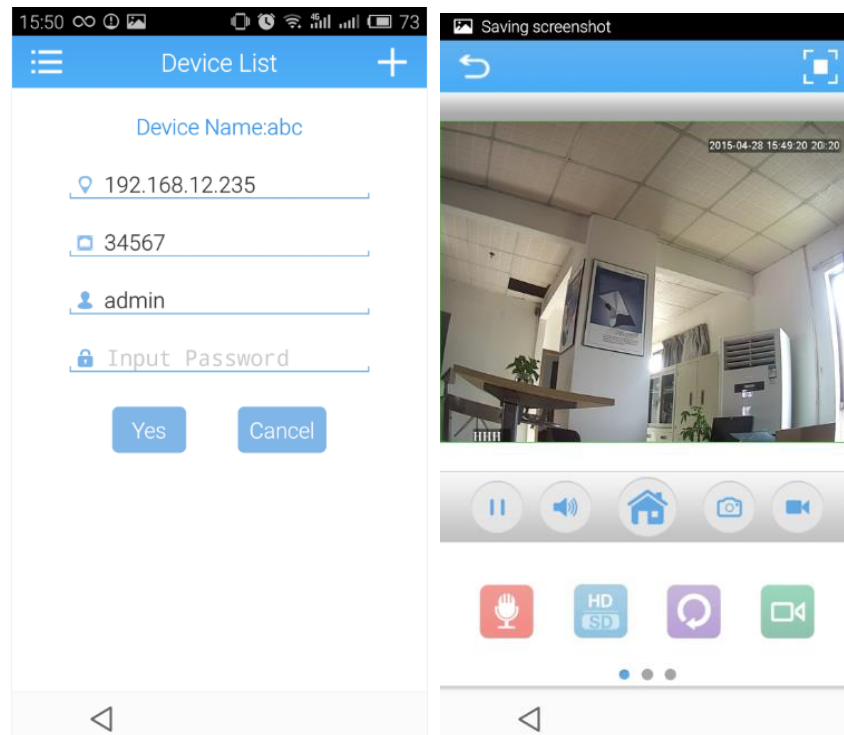
9.2 Mobile Access

Network Environment: Wi-Fi, 3G

Mobile System: Android, IOS

Software Name: XMEye

Software Download: Google Market, app store



PRODUCT WARRANTY CARD

Product Name		Model	
Purchase Date		Distributor	
Purchase Place			
Customer Name		Occupation	
Tel		Post Code	
Company			
Address			

Warranty:

Warranty period: One year.

The Warranty Card only applies to products purchased from us.

Keep it safe for better service.